

ENDONEWS

ENDODONTICS, LLC / HAMDEN / CONNECTICUT / SUMMER 2011 / WWW.ROOTCANALDRS.COM

Dr. Cohen to practice in the New Haven Office only

As many of you know, Dr. Henry Cohen is the founder of our endodontic practices in New Haven and Hamden. Over many years he has been a mentor and friend to numerous colleagues. Recently, Dr. Cohen has made the decision to practice in New Haven only. Drs. Cha and Jiang and the staff will miss working with him in the Hamden office and wish him the very best. Drs. Cohen and Siracuse will practice in New Haven and Drs. Cha and Jiang will practice in Hamden.



MEMBERS OF OUR CARING ENDO TEAM POSED WITH DR. COHEN: DEBBIE, DENISE, DR. JIANG, VANESSA, TINA, TIANI, STEPHANIE AND DR. CHA (LEFT TO RIGHT) PHOTO COURTESY BY DR. BARRY WEISS

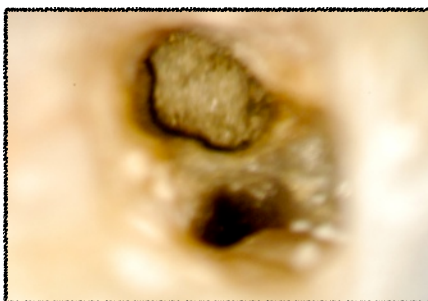
Management of Complicated Root Resorption

Root resorption is usually a sequela following injuries to or irritation of the periodontal ligament (PDL) and/or tooth pulp. When root resorption is combined both internal and external defects, it presents a complicated clinical situation which compromises the prognosis. Providing a stable and biocompatible barrier is a key to successfully manage the defect. Current studies support the use of MTA (Mineral Trioxide

Aggregate) as the material of choice for its biocompatibility and sealing ability. In the recent case at our office, a resorptive defect in a maxillary molar was identified communicating between the furcation and the MB canal space using endodontic microscope. After granulation tissue was removed from the site, this defect was sealed with MTA (photo 1.) and reinforced with glass ionomer cement (photo 2.)

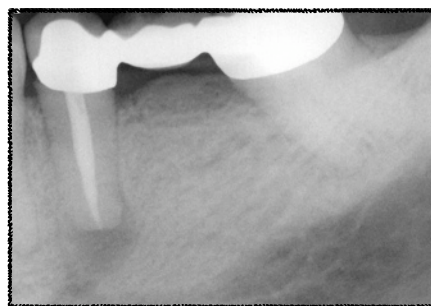


Glass ionomer cement placed over the MTA in MB resorption defect (top) while DB canal (bottom) was obturated with GP (Photo 2.)

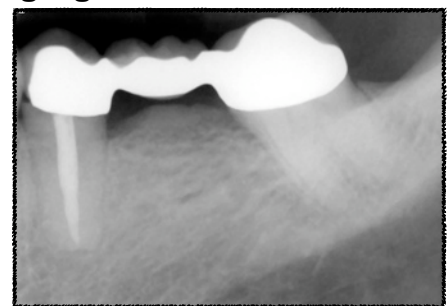


MTA placed over the resorption in the MB canal orifice and furcation (Photo 1.) Top is the resorption site. Bottom is DB canal.

Recall Highlight



Radiograph @ RCT Completion



Radiograph @ One Year Follow Up