

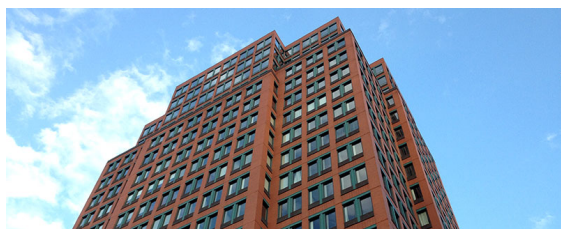
ENDONEWS

ENDODONTICS, LLC / NEW HAVEN / HAMDEN / CONNECTICUT / SPRING 2014

What's NEW with us in 2014?

Two Convenient Locations

We are pleased to announce that we now provide specialty endodontic service at two offices conveniently located in New Haven and Hamden. Our New Haven office is located on the 10th floor of the One Century Tower at the corner of Church and Grove Streets. Hamden office is located on the 2nd floor at Washington Place at 60 Washington Avenue. Directions can be found at our website www.rootcanaldrs.com. We look forward to taking care of patients at both locations equipped with state-of-the-art technology.



NEW HAVEN OFFICE



HAMDEN OFFICE

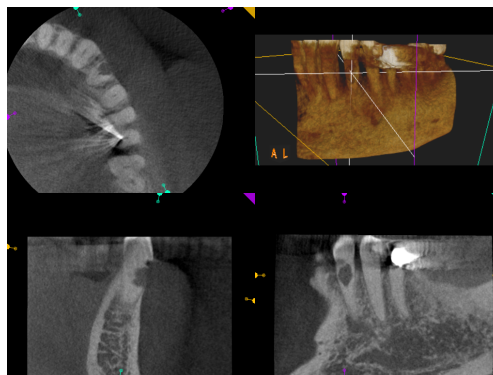
Broader Participation in Dental Plans

We have broadened our participation in the various dental benefit plans as below. Please call our office for detailed information.

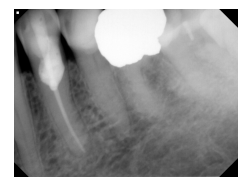
1. Delta Dental
2. CIGNA PPO
3. ANTHEM BCBS PPO Plus
4. MetLife
5. Guardian
6. Ameritas
7. Aetna

Management of External Resorption

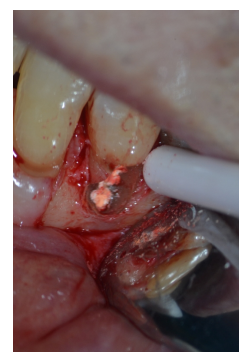
72 yr old healthy male patient presented with sub gingival external resorption discovered incidentally on tooth #21. The patient desired to retain the tooth.



Pre-Op 3D CBCT scan indicating the defect of external resorption at buccal sub gingival level.



Pre-Op radiograph (Left) and Post-Op (1yr) radiograph (Right)



Surgical flap (Left) and repair (Right) performed with Geristore and bonded composite restoration.



One year Post-Op clinical photograph indicating healthy soft tissue adjacent to the restoration.

BRUCE Y. CHA, D.M.D., JIN JIANG, D.D.S. & JOSEPH T. SIRACUSE, D.M.D., Practice Limited to Endodontics

One Century Tower, 265 Church Street, New Haven, CT 06510 (203) 777-6461

Washington Place, 60 Washington Avenue, Suite 202, Hamden, Connecticut 06518 (203) 281-6574